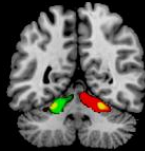
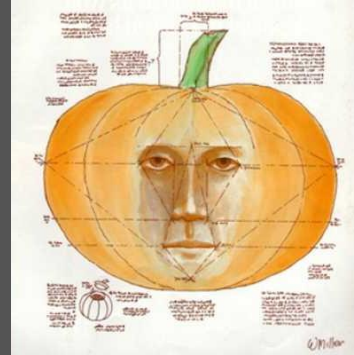


SPM8 for Basic and Clinical Investigators

Spatial Normalization

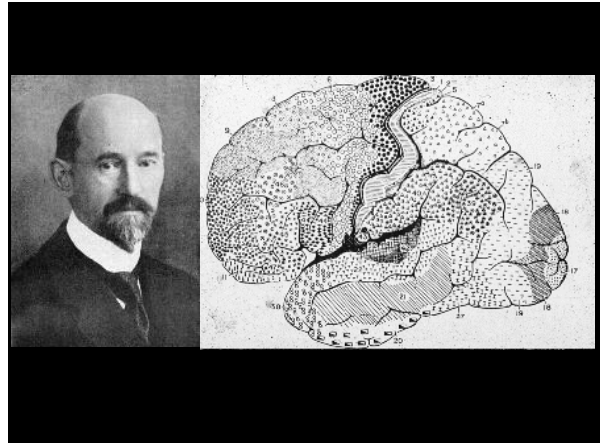
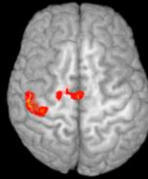


Comparing brains



Spatial Normalization: Why?

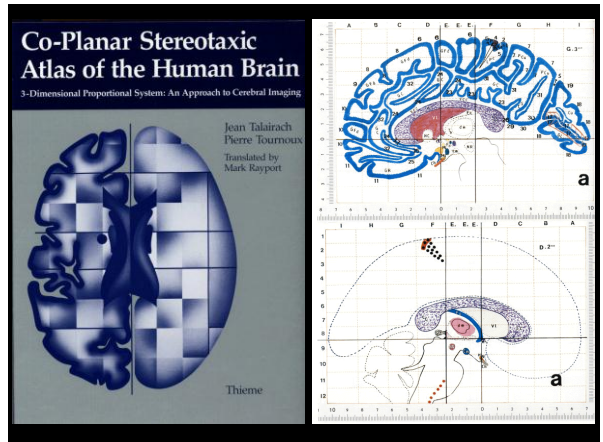
- Group averaging
 - Structural
 - Functional
- Labeling

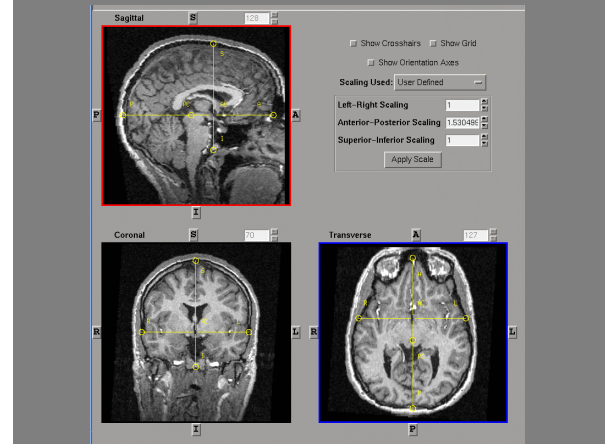
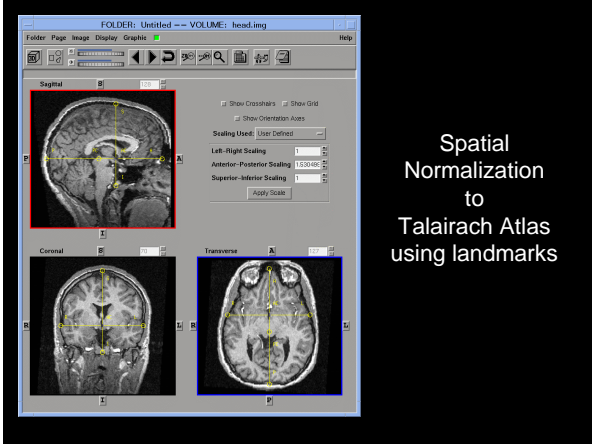


Spatial Normalization: How?

- landmark based
- template based

- linear transformations
- nonlinear transformations



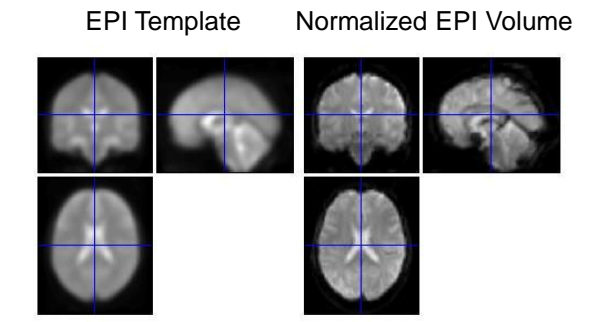
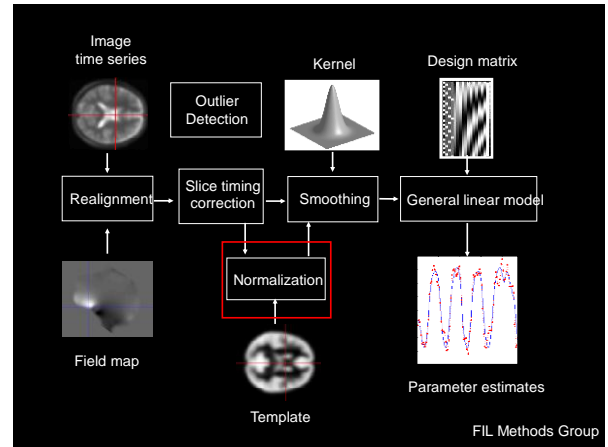


Standard spaces

Talairach Atlas MNI/ICBM AVG152 Template

The MNI template follows the convention of T&T, but doesn't match the particular brain
 Recommended reading: <http://imaging.mrc-cbu.cam.ac.uk/imaging/MniTalairach>

Ridgway



Spatial Normalization

- Direct
- Indirect
- Dartel

